

ANIMAX FEED SUPPLEMENT SHEEP



MANASEER
Industrial Complex



Introduction

The presence
of mycotoxin
starts from
the field



High
temperature
and humidity
Insects

Molds invade
during
storage



Mycotoxins
affect animal
feed



Effect of mycotoxin on sheep

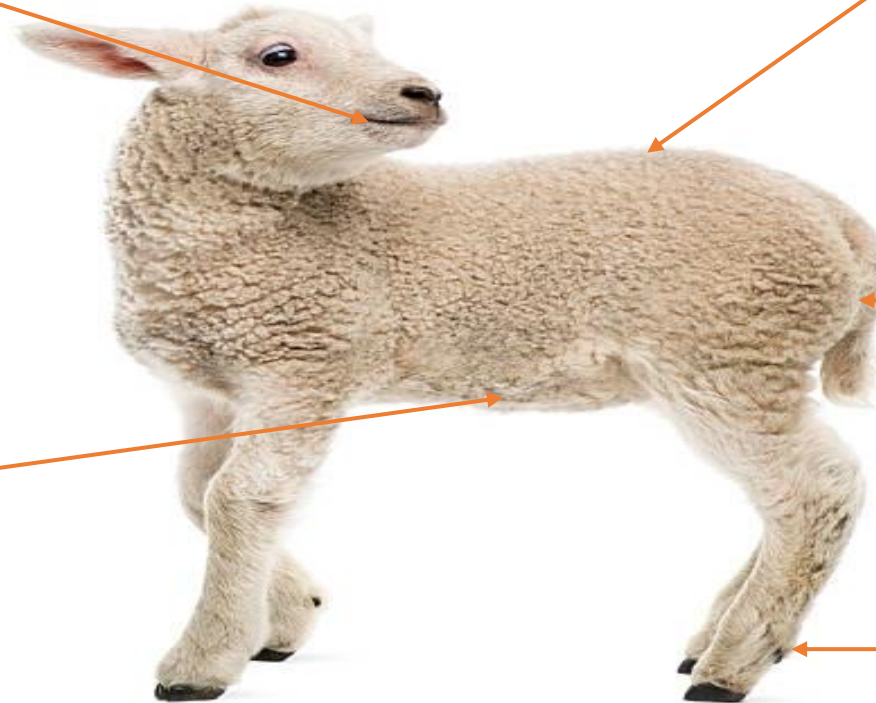
Reduce feed intake
Decrease nutrient
digestibility

Decrease growth rate
Reduce meat quality

Affect ovarian
function
Affect milk
production

Affect GIT health
Damage Hepatocyte
Reduce metabolism
efficacy

Increase
laminates



Effect of mycotoxin on sheep

Reduce
Animal
Productivity



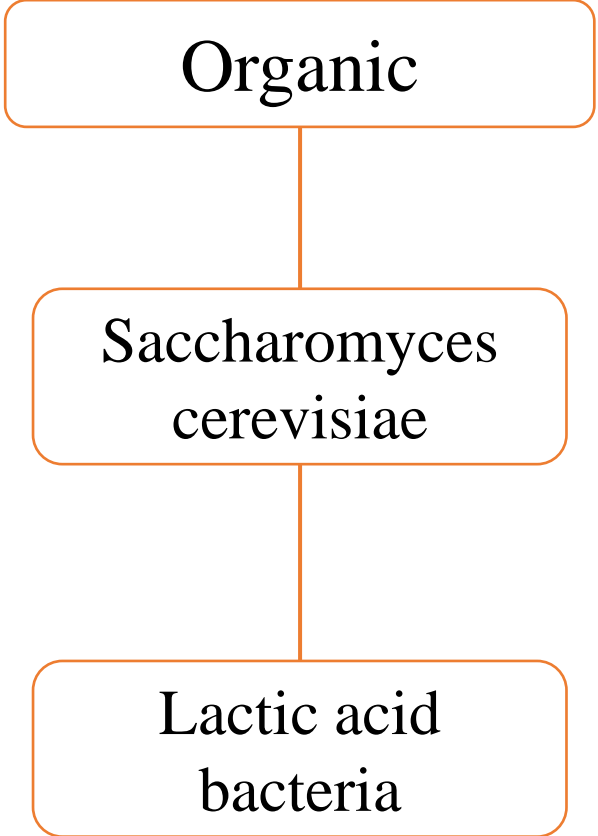
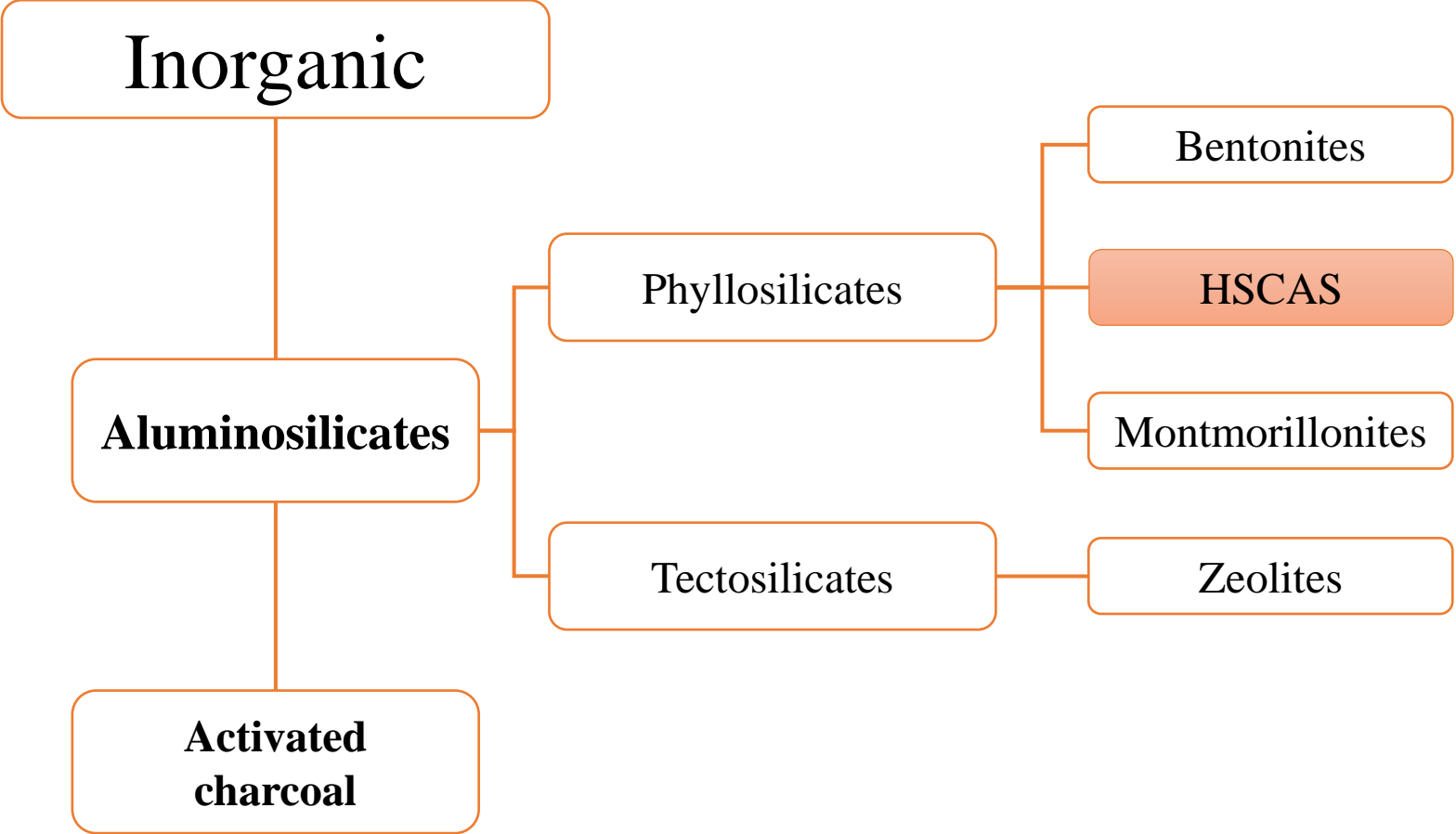
Performance

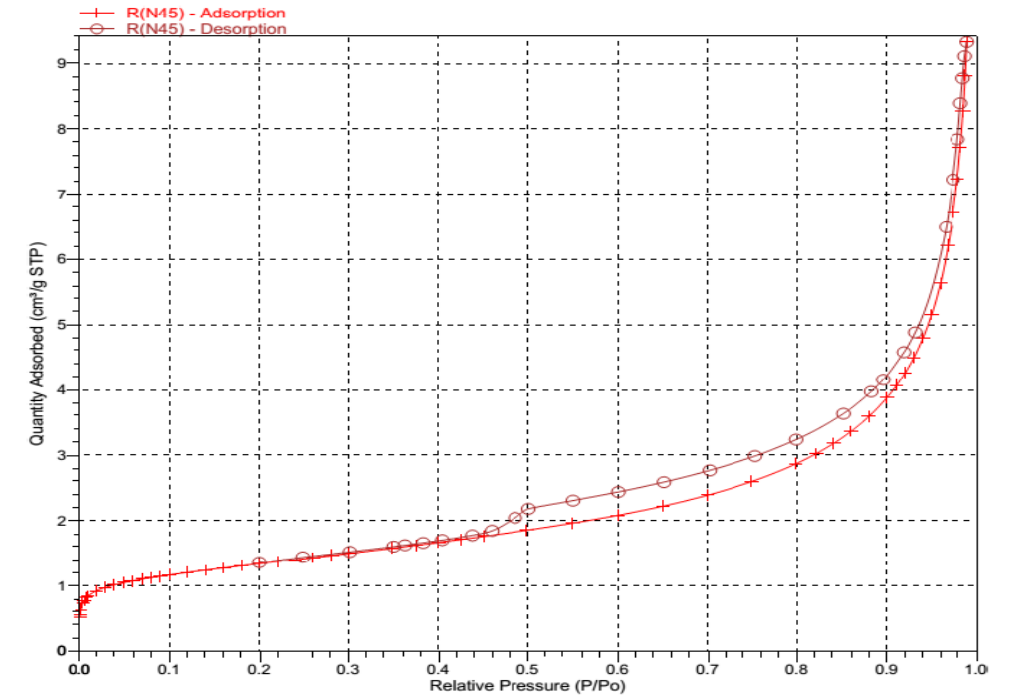
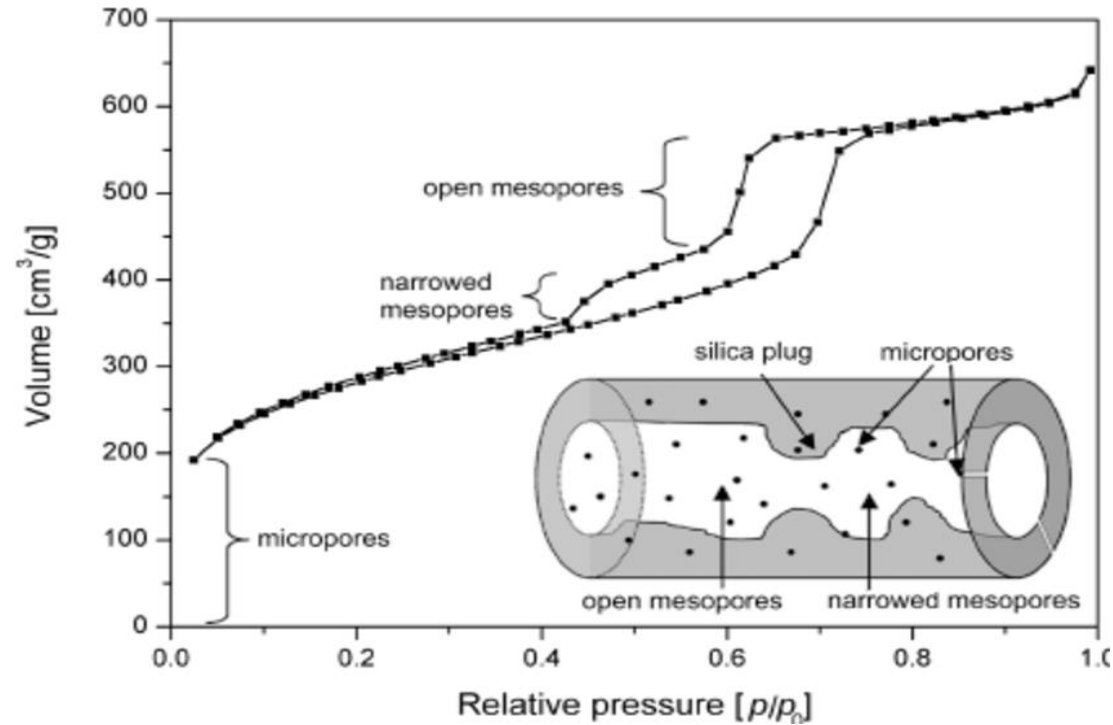


To tackle the problem of toxins in feed, mycotoxin binder must be used in the diet of sheep



Mycotoxin binders



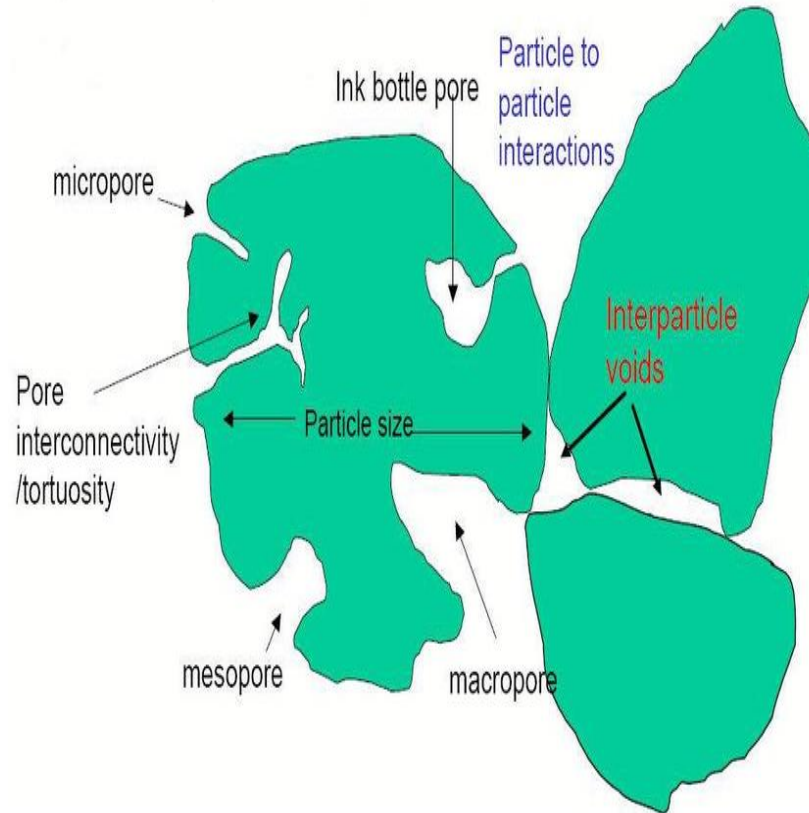


Animax Analysis

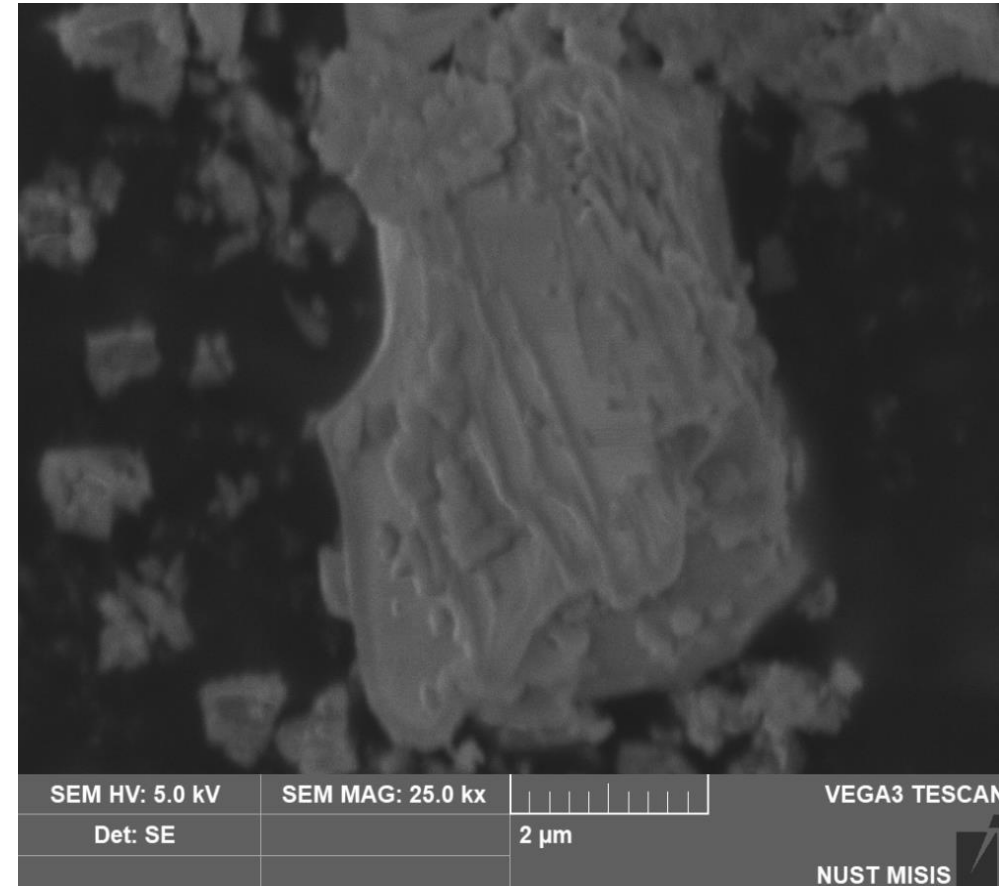
Animax is a IV in the classification of adsorption isotherm (attributed to monolayer-multilayer adsorption).

Animax shape

HSCAS is a phyllosilicates with a flake like interlayer structure



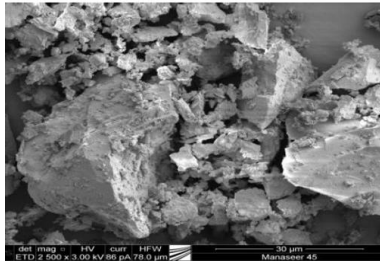
Classification of pore sizes:
micropores (< 2 nm), mesopores (2~50 nm), macropores (> 50 nm)



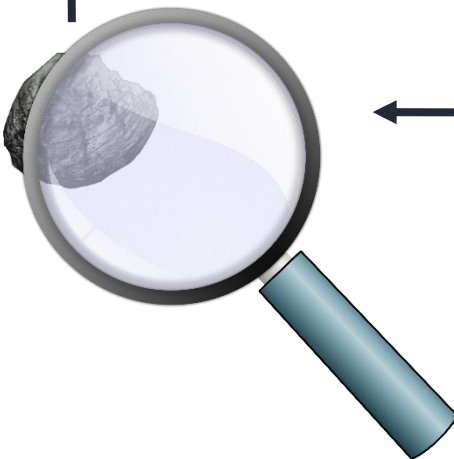
Animax Analysis



MANASEER
Industrial Complex



3- The final physical and chemical surface treatment is applied to achieve each individual group specific performance goals



2- Manaseer WI - Process is applied on each particle

Simulating the natural alternation of Olivine to Iddingsite

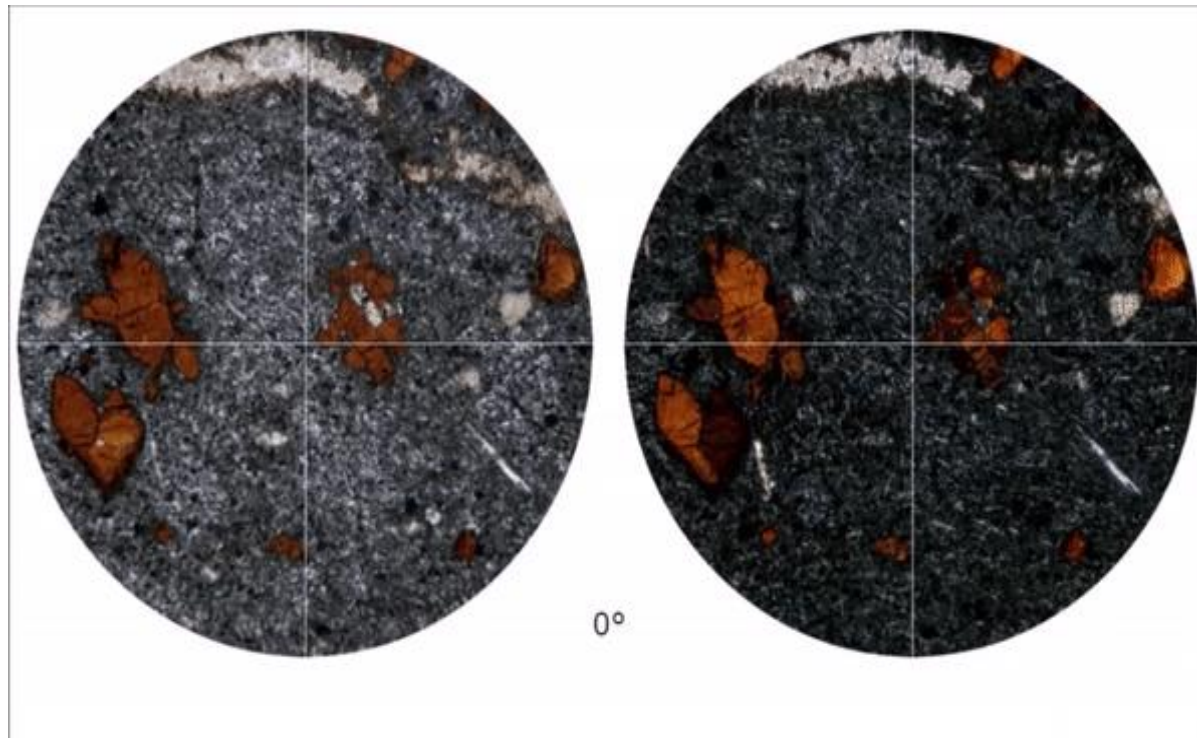
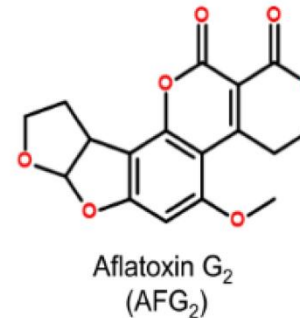
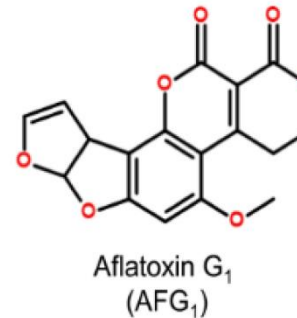
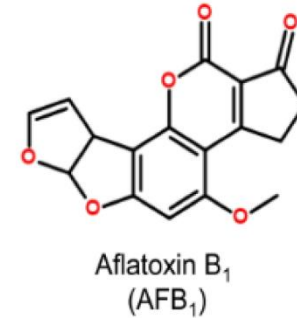


1- Grinding to the specific particle size



Adsorption

HSCAS reported to be very effective in binding AF



Aflatoxin is one of the mycotoxins that are produced by *Aspergillus flavus*

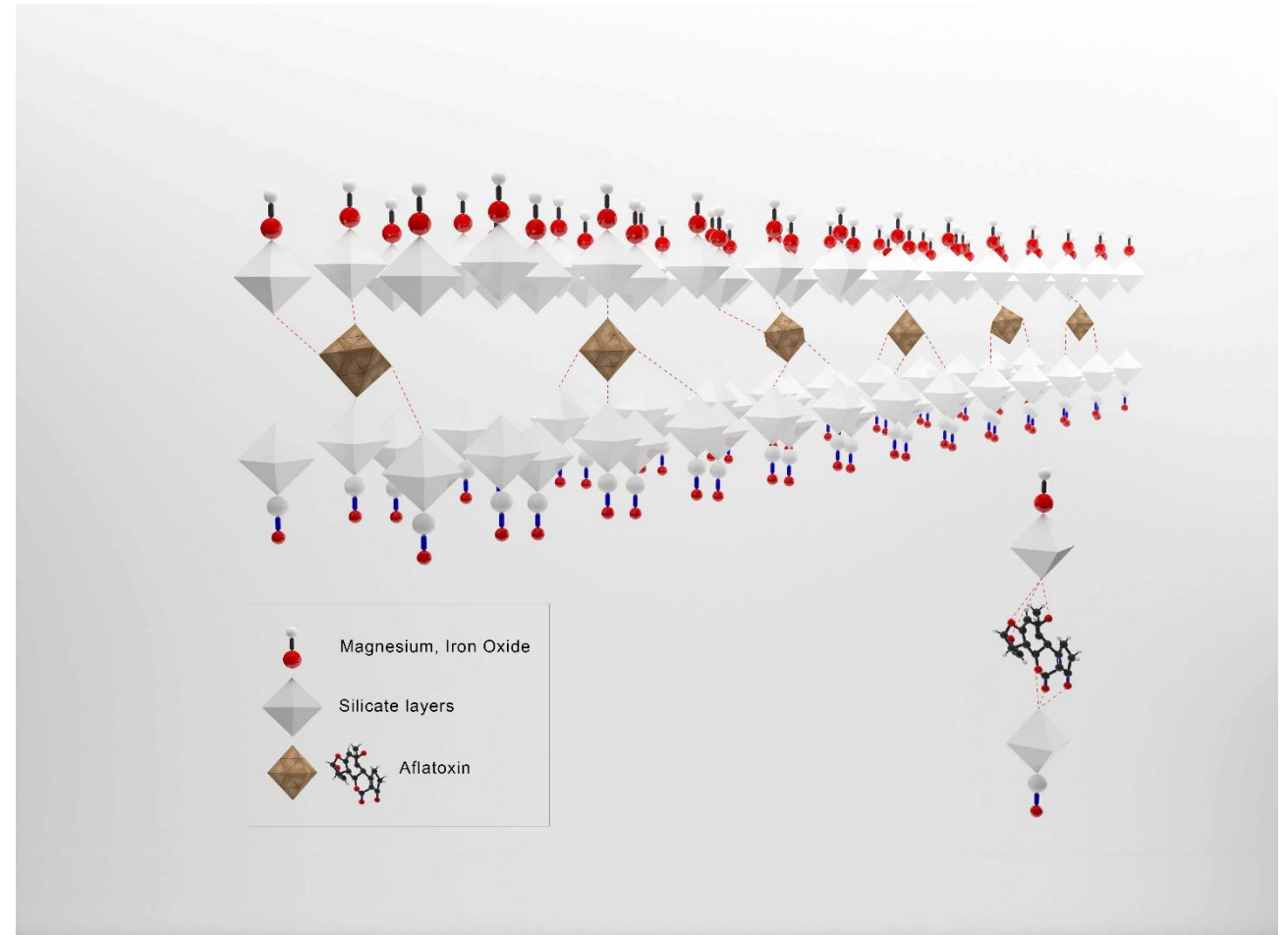
Animax Mode of Action

Mycotoxin binder

Adsorb the polar toxin and fix them between the clay layers.

Prevent toxins absorption in the intestine.

Remove the toxins naturally out of the body through faeces.



Animax Mode of Action

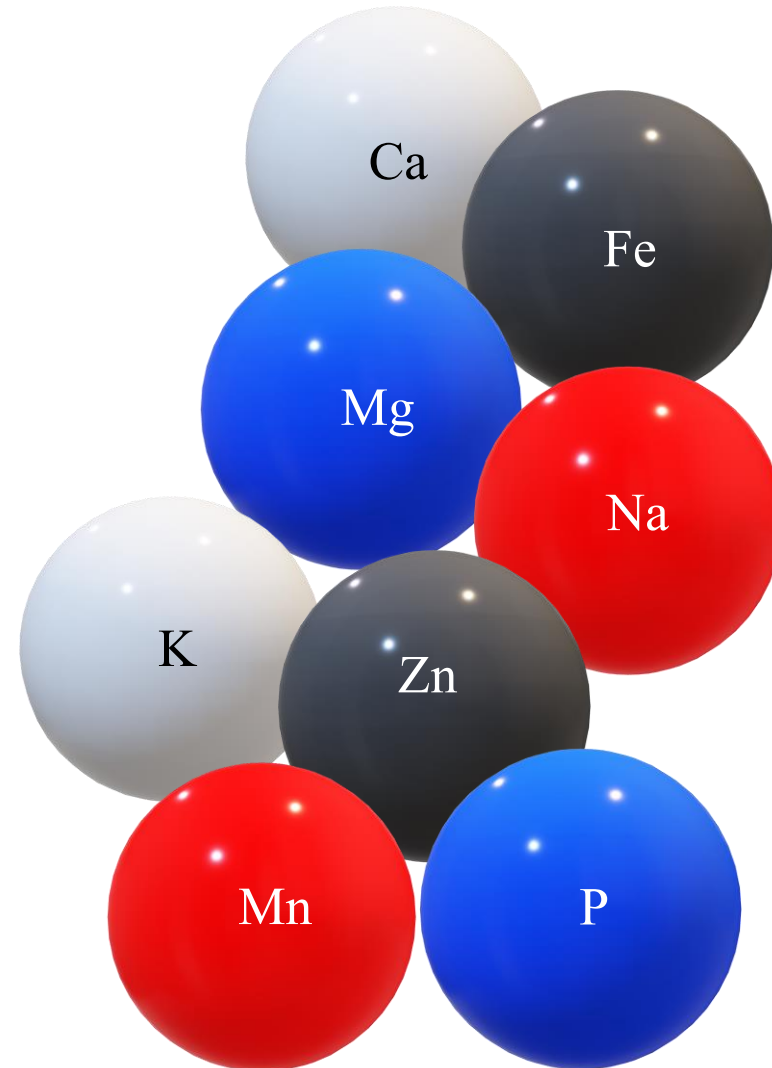
Elements Supplement

Contain many elements that helps in enhancing the metabolic rate of the animal.

Increase feed intake and improve the digestibility of DM, protein, and fat.

Promote good intestinal health and shape.

Enhancing the immunological function.



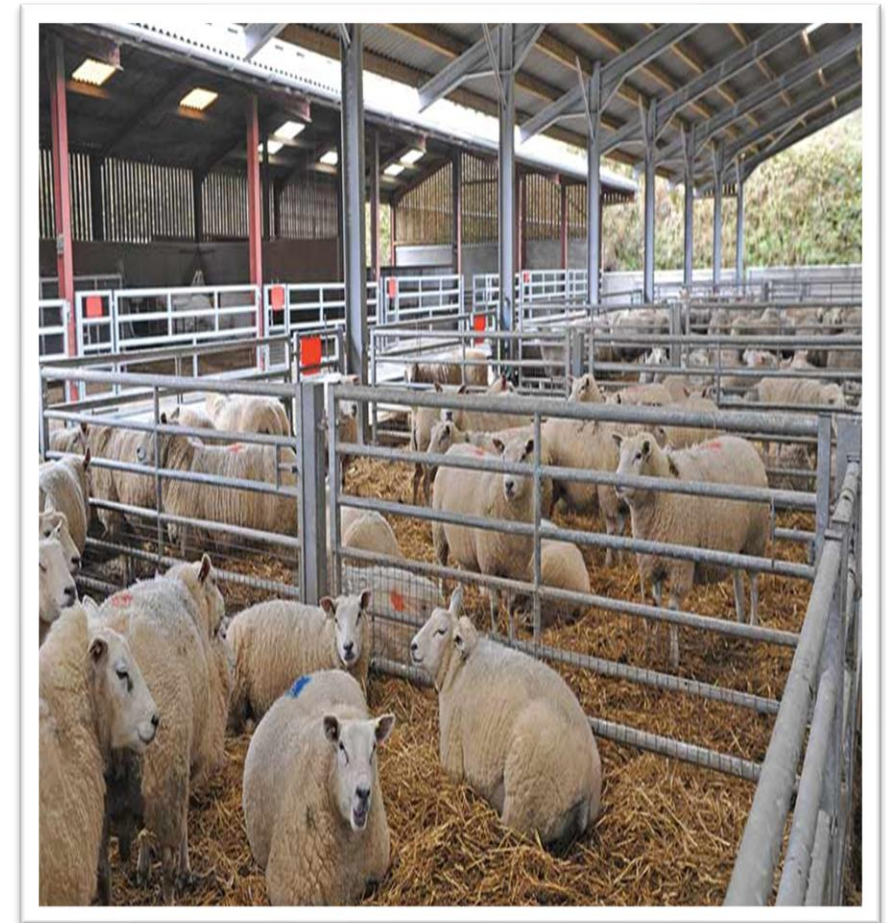
Animax Commercial Trial

The Animax Trial was done in cooperation with
Al-Delta For Trading Meat & Cattle Co.

In winter season

In open housed barn

In late stage of fattening period



Commercial Trial layout

Trial

**T1
Control**

**T2
Animax**

**2
Replicates
(200)
H/R**

**Start
weight
56 kg**

**Feed
1.5 kg/h/d**

**Trial
period
32 Days**



Ration Composition

- The rations of the treatments were Isocaloric and Isonitrogenous.
- Based on Barley, Corn, SBM, Wheat Bran and additives (sodium bicarbonate, salt, calcium carbonate).
- **Animax** was added to the additives then mixed with the ration.
- Feed was given at the level of 1.5 kg DM/h/d.



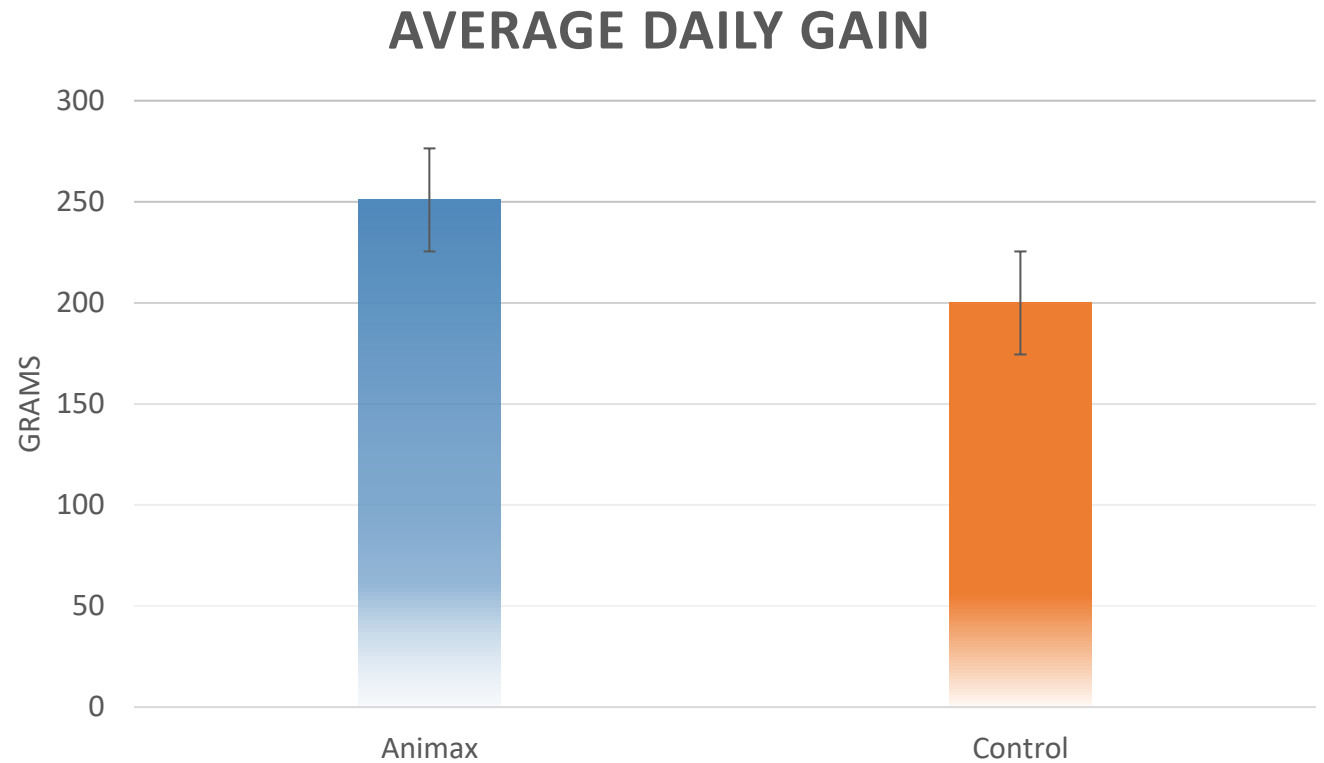
There was no significant variation in FI between treatments

Effect of Animax on Average Daily Gain.

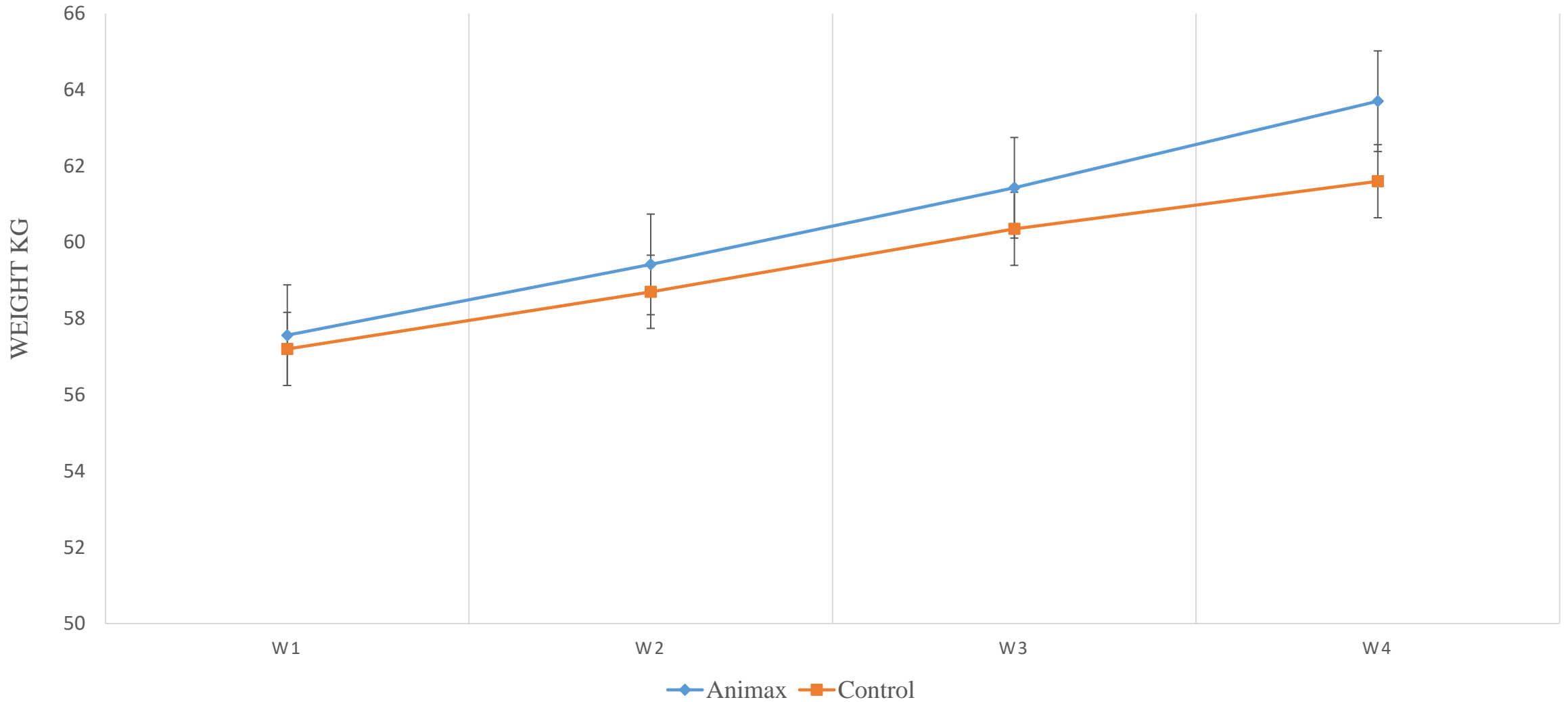
Animax significantly increase average daily gain.

Animax group: **251.6 g/d.**

Control group: **200 g/d.**



Effect of Animax on Weight Gain



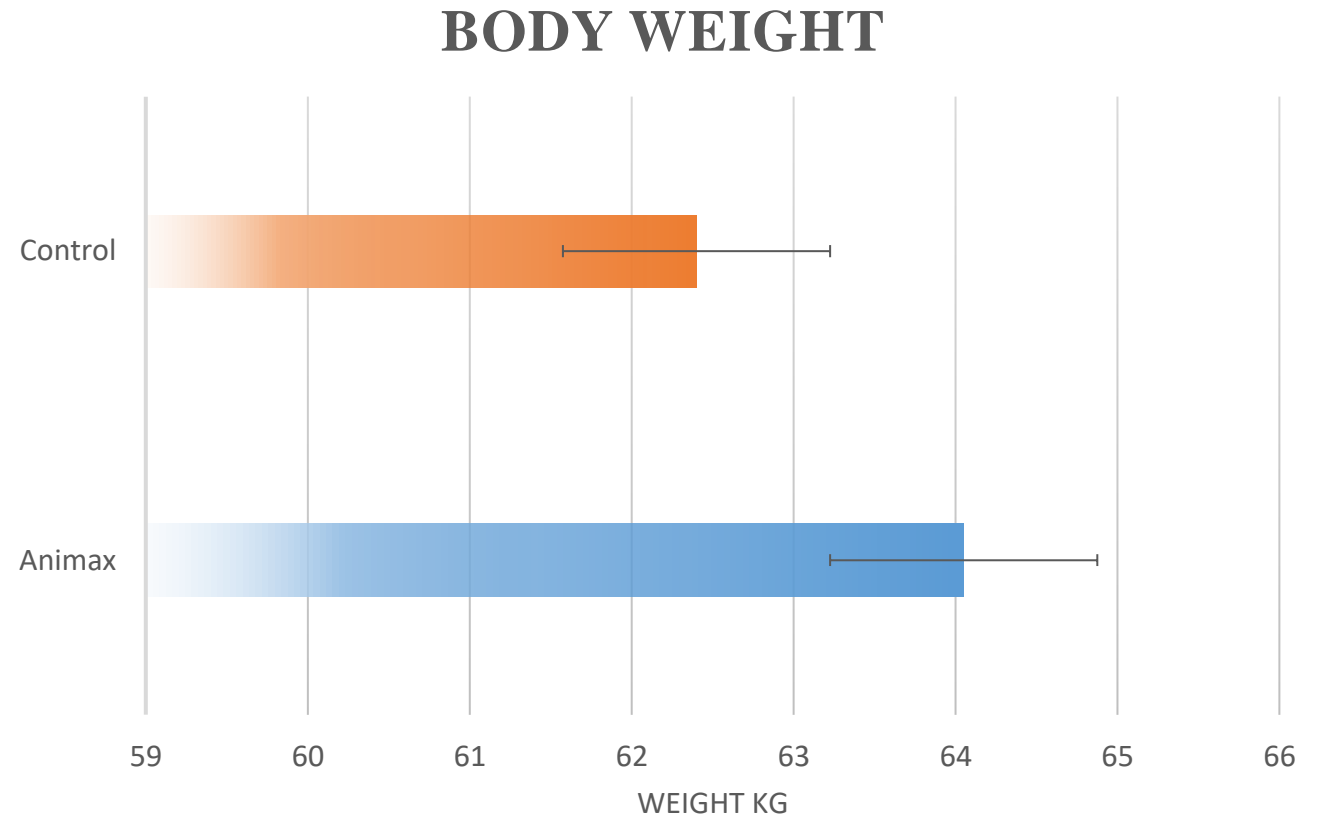
Effect of Animax on Body Weight.

Animax increased significantly sheep body weight at the end of the trial period.

Animax group: **64.051kg.**

Control group: **62.4kg.**

The Enhancement in body weight :
3.03%



ROI of using Animax.

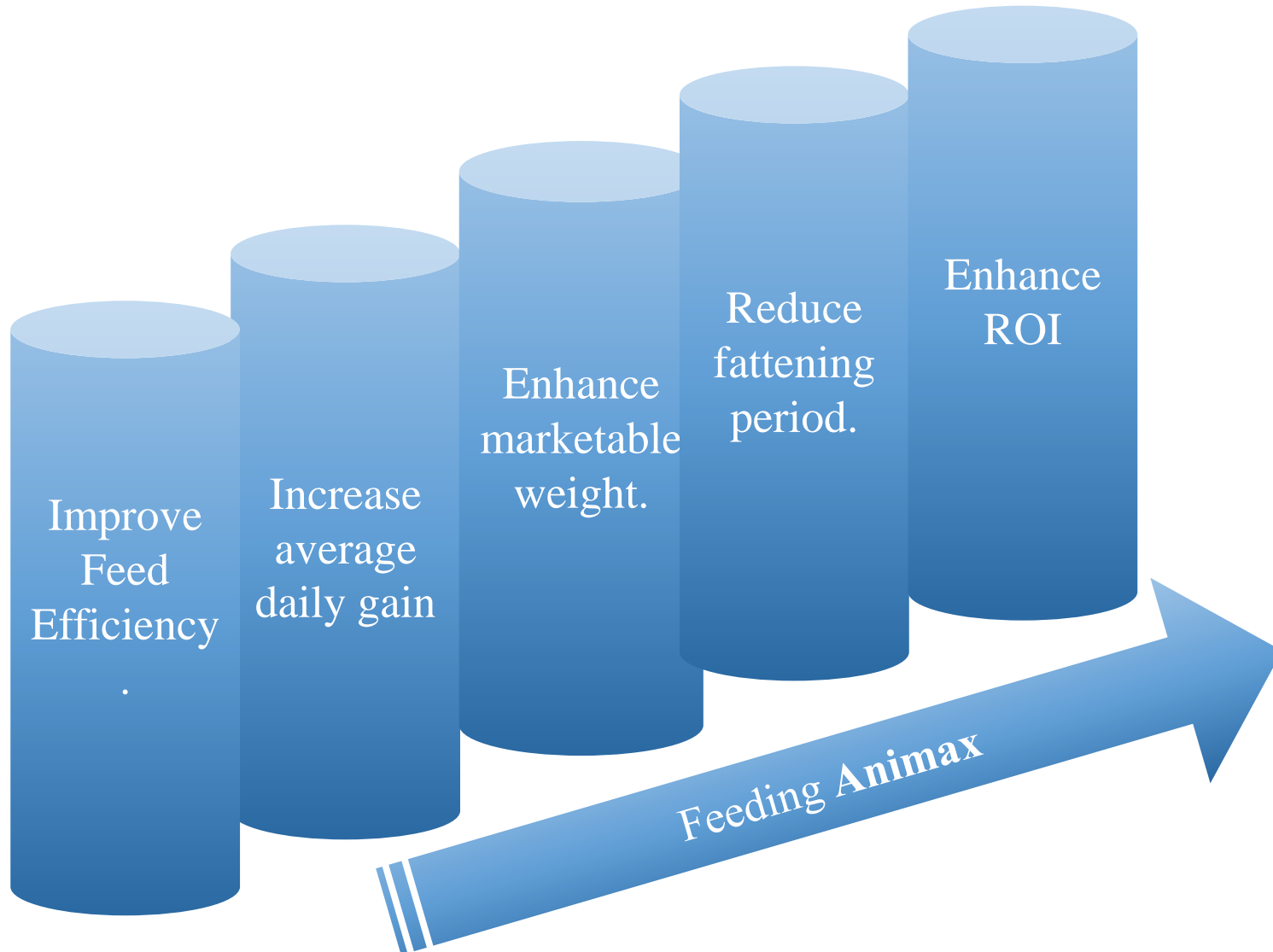
The increase in body weight was **1.632 kg** by the of the trial.

For 500 head the increase in total live weight will be **816 kg**.

If the selling price is **3.1 JD/kg**
The income will be **2529.6 JD**.



Conclusion



The End