

Construction Solutions from SHIELD



MANASEER
GROUP



MANASEER
Industrial Complex



MICSHIELD™



MICSHIELD™

MANASEER GROUP

Manaseer Group at a glance



MICShield is part of a strong family group in Jordan, Manaseer Group story began in 1999 as a chemical and fertilizer distribution company with a total head count of 15 employees, since then the group has grown to include 20 companies in various scopes. Today Manaseer Group has more than 10,000 employees only in Jordan with a capital investment of 3 billion USD.



USD 3 BILLION
Capital investment



10000+
Employees



STRONG PARTNERSHIPS
With leading corporations globally & locally



20
Years of experience



120+
Locations



20 COMPANIES +
In strategic and vital sectors



MICSHIELD™

MANSEER GROUP



BUILDING MATERIALS

- Ready Mix Concrete
- Cement
- Marble & Granite Aggregates
- Construction Chemicals



ENERGY

- Oil & Gas
- Power Plant



TRANSPORTATION SERVICES & MACHINERY TRADING

- Transport
- Machinery



INDUSTRIAL CHEMICALS

- Carbonate
- Smart
- Magnesia



FERTILIZERS & MINERALS

- NPK
- ULTRA
- Other Products Trade



INFORMATION TECHNOLOGY

- IT
- Hardwares
- Office Solutions

Construction Chemicals



“Building the future”



MICSHIELD™



PRODUCTS SEGMENTS



Surface Treatment



Bonding Aids & Primers



Protective Coatings



Waterproofing



Grouting & Anchoring



Plastering & Putties



Concrete Repair



Tiling Systems



Joint Sealants



Concrete Admixtures



Flooring Solutions



Grinding Aids



Ready Mix & Precast

Concrete Solutions

Concrete ready mix improved behavior for different mix designs and applications by **MICShield** concrete admixtures, fillers and other additives to concrete ready mix which can partially replace cement and some of our nature resources.





CONCRETE ADMIXTURES

EN934-2	ASTM C494	Description
Table 8	Type B	Retarding admixture
Table 2	Type A	Water-reducing admixtures
Table 6	Type C	Accelerating admixtures
Table 10	Type D	Water-reducing and retarding admixtures
Table 12	Type E	Water-reducing and accelerating admixtures
Table 11.1	Type F	Water-reducing, high-range admixtures
Table 11.2	Type G	Water-reducing, high-range, and retarding admixtures
-	Type S	Specific performance admixtures



MICSHIELD™

ADMIXTURES PRODUCT RANGE

- **Shield SPG 125:** High range water reducing, retarding superplasticizer.
- **Shield SPG 155:** High range water reducing and retarding superplasticizer for high strength concrete.
- **Shield SPG 245:** High range water reducing and retarding admixture.
- **Shield PCG 261:** High performance superplasticizer base on Polycarboxylic polymers.
- **Shield PCG 245:** High Performance Concrete Hyperplasticizer based on Polycarboxylic polymers
- **Shield SPF 23:** High range water reducing concrete superplasticizer admixture.
- **Shield SPF 25:** High range water reducing concrete superplasticizer admixture.





BONDING AIDS AND PRIMERS



MICSHIELD™

BONDING AIDS AND PRIMERS

- **Shieldbond SBR range:** Styrene butadiene copolymer emulsions used as bonding aid for improved bonding strength.
- **Shieldbond AB range:** Multi-purpose bonding agent and admixture for cement/ mortars.
- **Shieldprime AC range:** Acrylic-based primer and surface sealer prior to the application of decorative plasters.





SURFACE TREATMENTS



SHIELD PRODUCT RANGE:

Curing Compound:

- **Shieldcure WB:** water-based concrete curing compound based on wax emulsion

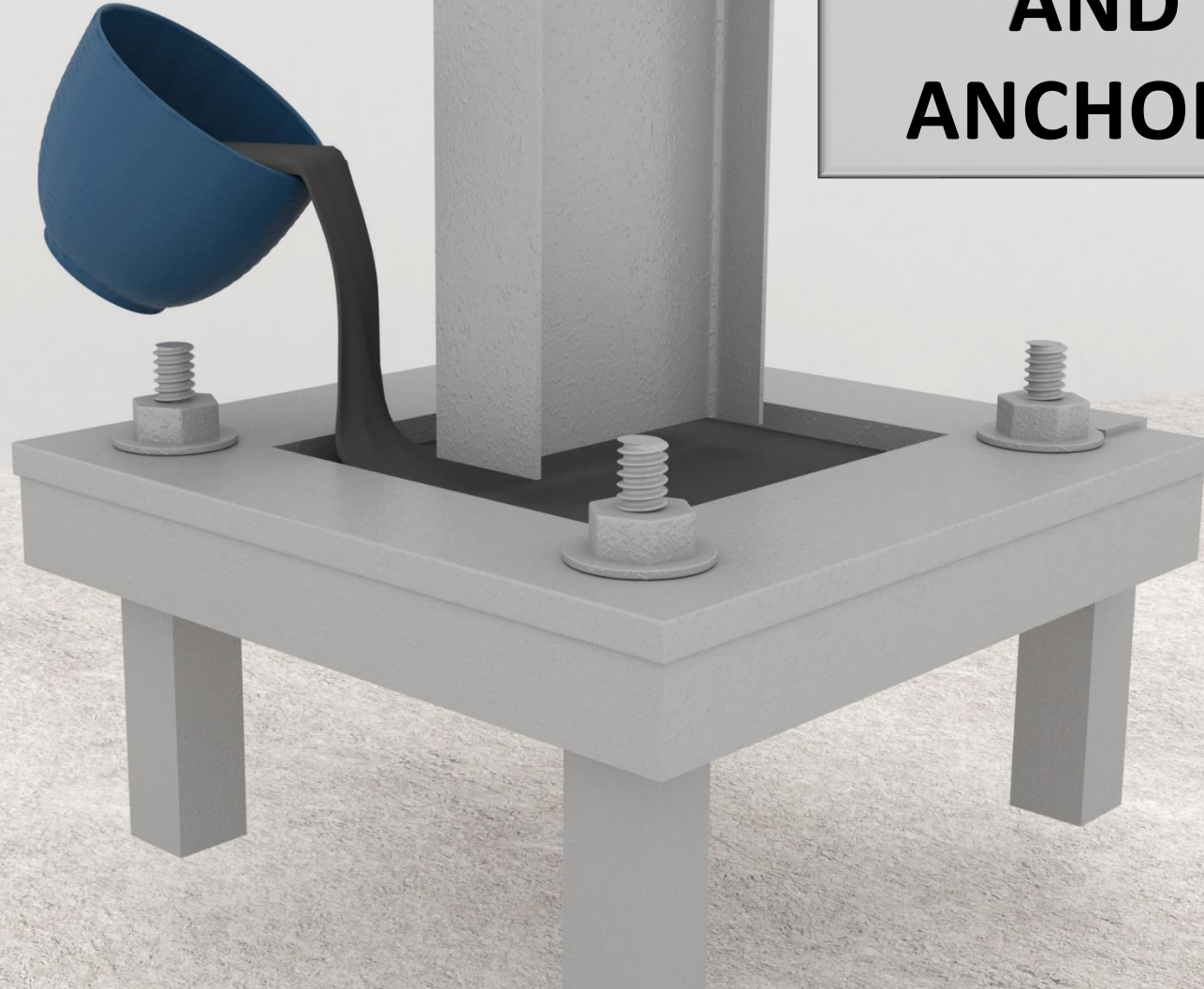
Mold Release Agents:

- **Shield Easymold:** water-based mold release agent
- **Shield Easymold S:** solvent-based mold release agent





GROUTS AND ANCHORS



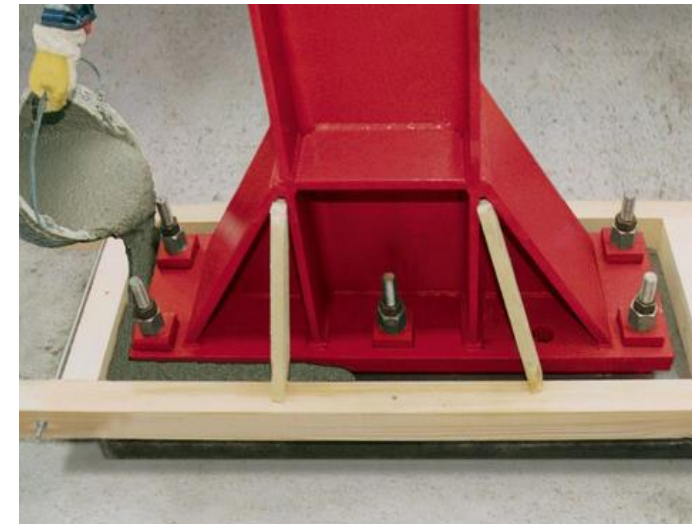


MICSHIELD™

GROUTING AND ANCHORING

SHIELD PRODUCT RANGE

- **Grout GP:** General purpose, cement-based non-shrink (precision) grout, (10-100) mm thickness
- **Grout HS:** High strength, cement-based non-shrink (precision) grout, (10-100) mm thickness
- **Grout Turbine 90:** High strength cement-based non-shrink (precision) grout especially formulated for bridge bearings, parapet posts, and windfarms.





MICSHIELD™



FLOORING SOLUTIONS



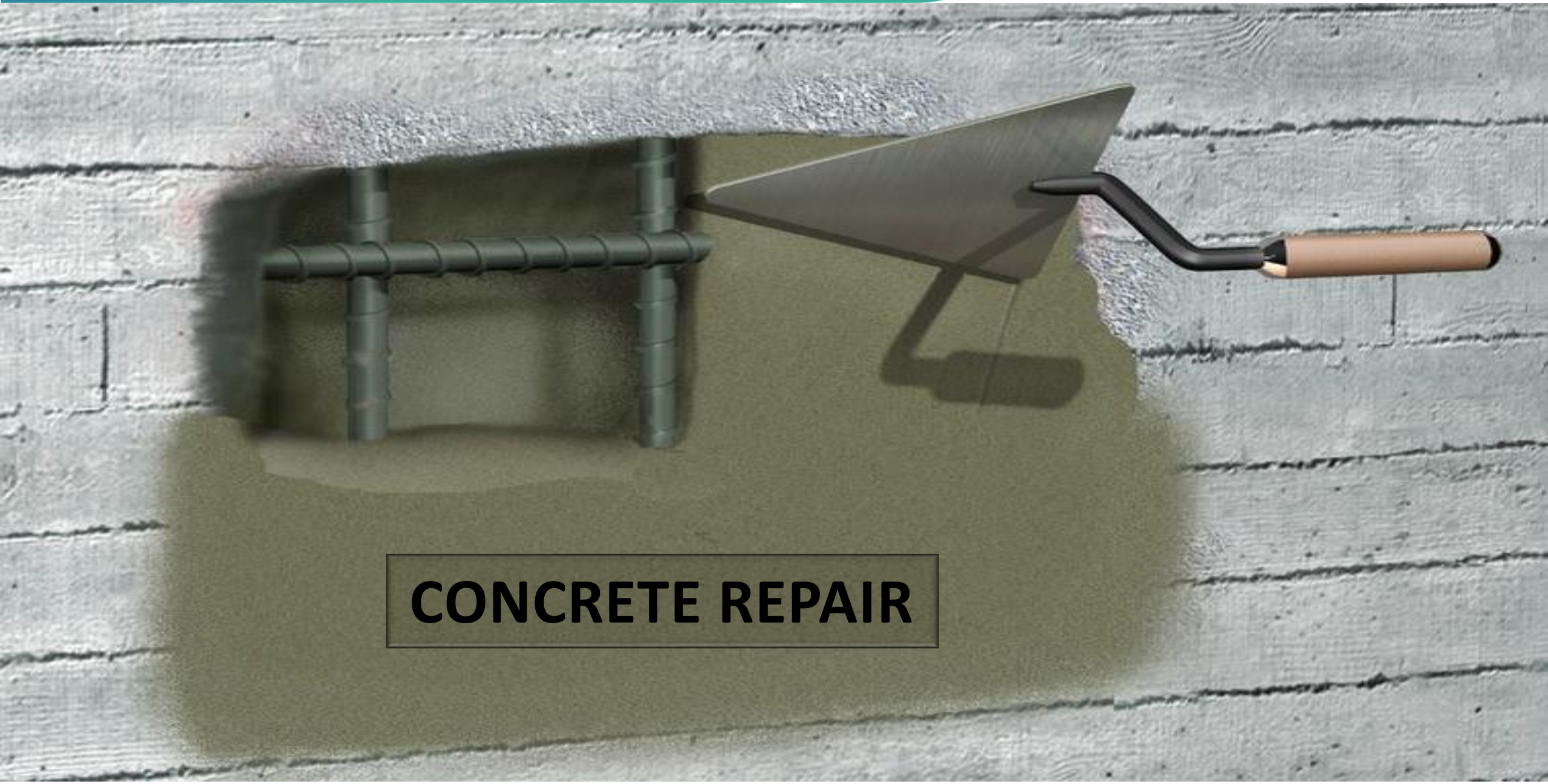
FLOORING SOLUTIONS

- **SurfQuratztop:** Quartz-based surface hardener for concrete pavements, parkings, warehouses, sidewalks, stamped concrete.
- **Shieldfloor CML10:** Cement-based, self-levelling underlayment at thicknesses 2 – 10 mm.
- **Shieldfloor CML40:** Cement-based, self-levelling underlayment at thicknesses 8 – 40 mm.
- **Shieldfloor CMS100:** Polymer-modified, cement-based screed at thicknesses 30 – 100 mm.

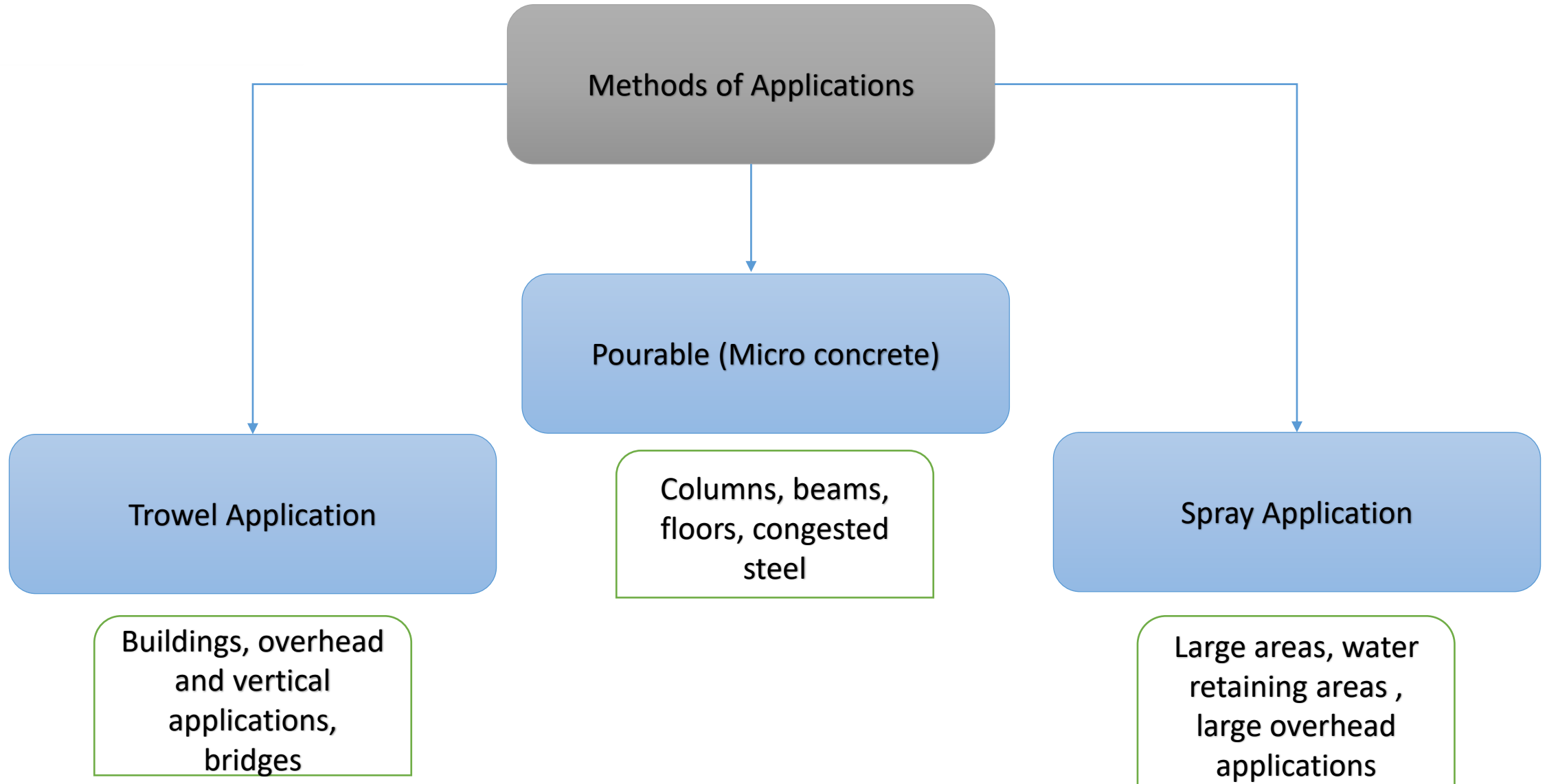




MICSHIELD™



CONCRETE REPAIR





Plugging Mortars:

- **Plug 1:** Rapid setting mortar for the rapid patching and plugging active water leaks in 1 minute.
- **Plug 5:** Rapid setting mortar for the rapid patching and plugging active water leaks in 5 minutes.

Non-structural (Cosmetic) Repairs:

- **Rep FC:** Non-structural cement-based fairing coat for treating concrete imperfections.
- **Rep CF:** Non-structural cement-based crack filler.

Structural Repairs:

- **Rep S:** Cement-based **thixotropic** repair mortar, at thicknesses (10 – 100) mm.
- **Rep HSF:** Fiber-reinforced, **thixotropic**, cement-based repair mortar, up to 50 mm thicknesses.
- **Reflow XTRA:** High flow, **micro concrete** with self-compacting properties.
- **Reflow FS:** Fast setting, **micro concrete** with self-compacting properties.
- **RepFlow SCLA:** Free flowing, self compacting, low-alkali **micro concrete**.
- **Shieldrep CSP30:** Cement-based, **Spray-applied** repair mortar.





MICSHIELD™

WATERPROOFING



MICSHIELD™

CEMENT-BASED PRODUCT RANGE

Characteristics	Shieldproof CW105	Shieldproof CW250	Shieldproof CW270	Shieldproof CW273
Main function	Structural protection behind cladding	Topcoat for concrete protection against ingress	Structural protection against water and moisture	Lining for water containing structures
Resistance to positive water pressure	5 bars	5 bars	7 bars	7 bars
Resistance to negative water pressure	-	-	1.5 bars	3 bars
Application	Behind cladding	Behind cladding Topcoat, wet areas Non-toxic	Wet areas, water tanks and swimming pools Non-toxic	Wet areas, water tanks and swimming pools Non-toxic





MICSHIELD™

ACRYLIC PRODUCT RANGE

Characteristics	Shieldguard AW125	Shieldguard AW140
Main function	General purpose, flexible and anti-carbonation waterproofing coating	Premium grade, flexible and anti-carbonation waterproofing coating
Elongation at break	> 250%	> 400%
Wet film thickness	400 microns	500 microns
Application	Roofs, walls, bridge abutments	Roofs, walls, bridge abutments





MICSHIELD™

TILING SYSTEMS





MICSHIELD™

PRODUCT RANGE & CLASSIFICATION

Product	EN 12004 Classification	Definition
TAW 106 TAG 106	C1T	Normal Cement-based tile adhesives for indoor and outdoor, vertical and horizontal applications
TAW 106 E TAG 106E	C1TE	Normal Cement-based, tile adhesive with extended open time, for indoor and outdoor, vertical and horizontal applications
TAW 114 TAG 114	C2T	Improved Cement-based and polymer-modified tile adhesive for indoor and outdoor, vertical and horizontal applications
TAW 114E TAG 114E	C2 TE	Improved Cement-based and polymer-modified tile adhesive with extended open time for indoor and outdoor, vertical and horizontal applications
TAW 116 TAG 116	C2 TE S1	Improved Cement-based, polymer-modified and deformable tile adhesive with extended open time for indoor and outdoor, vertical and horizontal applications
TAW UW TAG UW	C2 TE S1	Improved Cement-based, polymer-modified and deformable tile adhesive , specially formulated for swimming pools, shower stalls and permanent submerged conditions.





Product	TAW 106	TAG 106	TAW 106E	TAG 106E	TAW 114	TAG 114E	TAW 116	TAG 116	TAW UW
Types of tiles									
Ceramic	•	•	•	•	•	•	•	•	•
Internal Porcelain	•	•	•	•	•	•	•	•	•
External Porcelain			•	•	•	•	•	•	•
Gres tile			•	•	•	•	•	•	•
Natural Stones			•	•	•	•	•	•	•
Mosaic tile					•		•		•
Glass tiles					•		•		•
Large format ceramic tile					•	•	•	•	•
interior claddings			•	•	•	•	•	•	•
Substrate									
Cement-based	•	•	•	•	•	•	•	•	•
Heated floor systems					•	•	•	•	•
Tile-on-Tile					•	•	•	•	•
Plaster and cement boards					•	•	•	•	•
Application Area									
Internal	•	•	•	•	•	•	•	•	•
External	•	•	•	•	•	•	•	•	•
Wall	•	•	•	•	•	•	•	•	•
Floor	•	•	•	•	•	•	•	•	•
Wet Rooms	•	•	•	•	•	•	•	•	•
Swimming pools									•
Submerged									•
Façade							•	•	
Heavy traffic areas					•	•	•	•	



MICSHIELD™



TILE GROUITS





MICSHIELD™

PRODUCT RANGE & CLASSIFICATION

Products

EN 13888 Classification

Description

Shieldgrout CG1

CG1

General-purpose, cement-based tile grout for joint widths' up to 6 mm.

Shieldgrout CG2

CG2WA

Premium, cement-based tile grout for joint widths' up to 6 mm

Shieldgrout CG12

CG2WA

Premium, cement-based tile grout for wide joint widths' up to 12 mm





PLASTERS AND PUTTIES



MICSHIELD™

PLASTERS AND PUTTIES

MICShield provides multiple solutions for finishing



Plastering

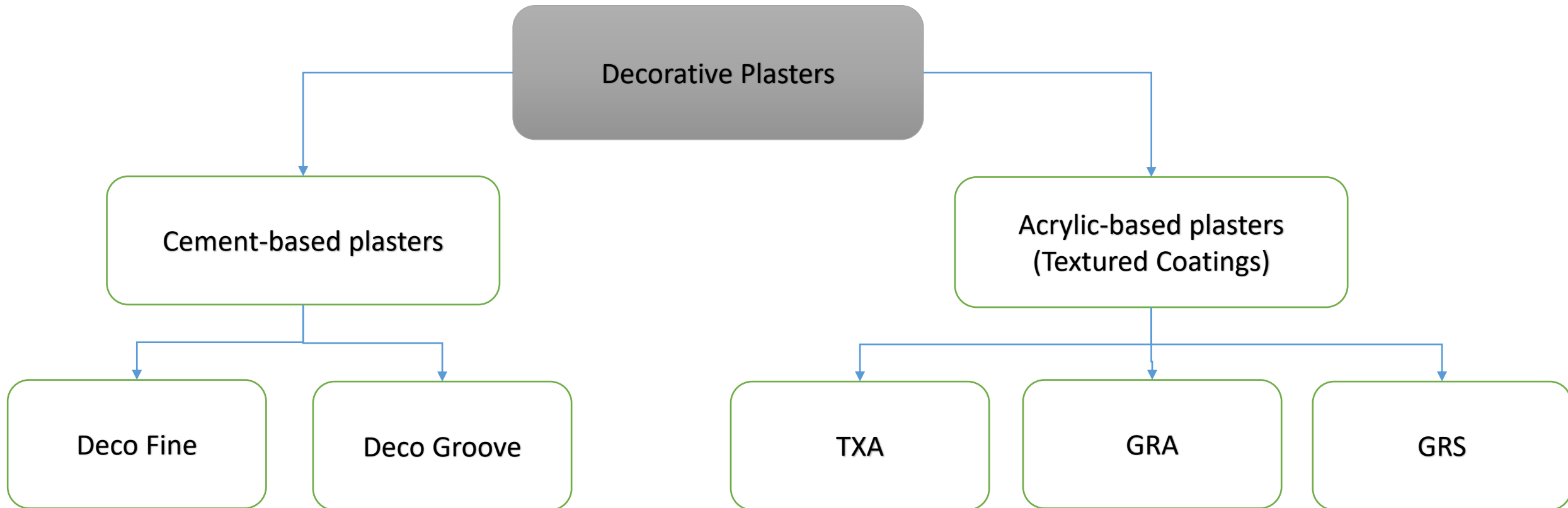


Putties



**Decorative
Plastering**

- Enhance aesthetic appeal and offer a slightly stronger and durable finish.
- Available in various colors and textures.
- Primarily, the wall is plastered in the standard order. After the plaster dries, the textured coating or decorative plaster is applied over it.





MICSHIELD™ CEMENT-BASED DECORATIVE PLASTERS

1. Deco Fine: Provides decorative European effects such as Mexican, Spanish, Antique, and Textured, with application Thickness: up to 5 mm.

2. Deco Groove: Provides decorative European effects such as Mexican, Spanish, Antique, and Textured, with application Thickness: up to 2.5 mm.





MICSHIELD™

ACRYLIC DECORATIVE PLASTERS



CEMENT-BASED PLASTERS RANGE:

PLASTER CP3: Polymer-modified, weather resistant, cement-based render at thicknesses **1-3 mm**.

PLASTER CP6: Polymer-modified, weather resistant, cement-based render at thicknesses **3-6 mm**

PLASTER CP16: Polymer-modified, weather resistant, cement-based render at thicknesses **6-16 mm**

PLASTER CP20: Polymer-modified, weather resistant, cement-based render at thicknesses **8-20 mm**

Plaster Key Coat: Cement-based, ready mixed mortar, provides a mechanical key for surfaces prior to the application of cement- and gypsum-based plasters and renders.

Shieldfix EIFS: Cement-based mortar and adhesive, reinforced with polymers, designed to be used for bonding thermal insulation boards.

Shieldcoat EIFS: Cement-based, polymer-modified, plaster designed to be used as a render coat on thermal insulation boards.



CEMENT-BASED PUTTIES RANGE:

PUTTY W10/ PUTTY G10: Single-component, cement-based, polymer-modified putty and skim coat, Available in white and grey colors and used for indoor applications at thicknesses 1 – 2 mm.

PUTTY W20/ PUTTY G20: Water-resistant, single-component, cement-based, Polymer-modified, putty and skim coat, Available in white and grey colors and used for indoor and outdoor applications at thicknesses 1 – 2 mm.





BS EN 998-1

Specification for mortar for masonry Part 1: Rendering and plastering mortar

- GP: General purpose rendering/plastering mortar
- LW: Lightweight rendering/plastering mortar
- CR: Coloured rendering mortar
- OC: One coat rendering mortar for external use
- R: Renovation mortar
- T: Thermal insulating mortar
- FP: Fracture pattern

Thank you

ANY QUESTIONS?
