



Premix cementitious spatterdash for blocks and fair-faced concrete

Description

Plaster Key Coat is a premix cementitious spatterdash based on mineral bonding agent. It is used prior to application of cement & gypsum based plastering and rendering to enhance the bonding of the plaster by providing a mechanical key. It is used for internal/external walls & ceilings, fair-faced concrete and other substrates.

Plaster Key Coat can be applied manually or using spray machines at a thickness up to 4 mm.

Uses

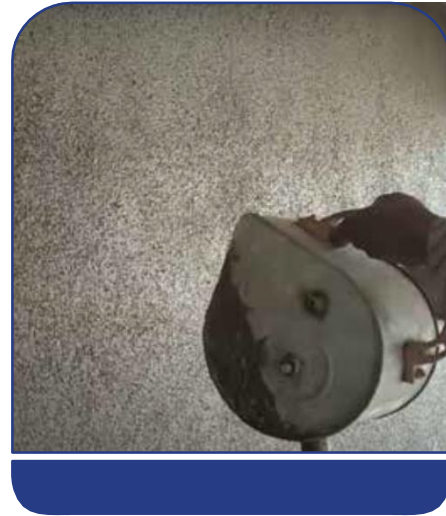
- Fair-faced concrete surfaces and precast panels.
- Block walls and ceilings.
- Used for Internal & external surfaces.

Characteristics / Advantages

- Superior adhesion.
- Excellent workability.
- Suitable for wet and dry conditions.
- Factory controlled pre-blended dry mix which requires only addition of water.
- Applied by hand or spray machine.
- Contains no chloride-based additives.
- Low VOC.

Standard Compliance

- BS EN 998-1:2016.
- ASTM C926.
- ASTM C150, Type 1.



Typical Properties

Appearance	: Grey granular powder
Composition	: Portland cement, sand, and special additives
Grain size	: 0 – 4 mm
Mixed density	: 1.86 ± 0.10 kg/ltr
Working time	: 60 minutes
Setting time	: 3 – 5 hours
Compressive strength	: ≥ 15 MPa @ 28 days
Flexural strength ASTM C348	: ≥ 2.5 MPa @ 28 days
Bond strength EN 1015-12	: ≥ 0.50 MPa @ 28 days

Application Instructions

Surface preparation

The substrate should be sound and clean from dust, oils, dirt, curing compounds, etc. prior to application, the entire surfaces should be dampened using clean water.



Mixing

Pour into a suitable container 5.5 – 6.0 liters of clean water for each 25 kg Plaster Key Coat bag (or 11 – 12 liters for 50 kg bags). Add the powder to the water and mix using a low speed mixing drill fitted with the suitable mixing paddle. Continue mixing for 3-4 minutes until achieving lumps-free mix. Allow the mixed material to stand for 5 minutes, then re-stir slightly with no extra water to be added to the mix.

Application

Apply Plaster Key Coat on the prepared substrate using a suitable spraying machine, Tyrolean box or manually by suitable plastering trowel. Apply in a single coat until achieving the desired rough texture. Allow the applied material to remain undisturbed for at least 48 hours. Ensure that the applied material covers at least 95% of the surface area.

The applied material should be cured every 12 hours for 3 days prior to application of the subsequent plaster/render.

Cleaning

Tools should be cleaned immediately with clean water. Hardened material should be removed mechanically.

Consumption

Approximately 1.50 kg/ m² @ 1 mm thickness.

Packaging

Plaster Key Coat is available in 25 kg and 50 kg bags.

Storage

Plaster Key Coat has a shelf life of 12 months when stored in its original unopened packing in dry conditions. Shelf life may reduce if the recommended storage conditions changed.

This product is environmentally friendly.

Limitations

- Ensure the substrate suitability prior to application of the product. To assess the suitability, reference sample should be applied.
- Do not apply the product if the ambient temperature is less than 5 °C.
- Hot weather practices should be adopted during application and curing if the temperature is above 35 °C.
- Working area should be covered in case of harsh weather (wind, dust, rain, etc.)

Safety Instructions

Like any cementitious product, Plaster Key Coat contains hydraulic cement and may cause irritation to skin or eyes. For further information Refer to the Material Safety Data Sheet

Disclaimer

Manaseer Industrial Complex has the right to amend its datasheets anytime. Please make sure to have the latest published datasheet version.

Manaseer Industrial Complex
Is a Member of US Green Building

